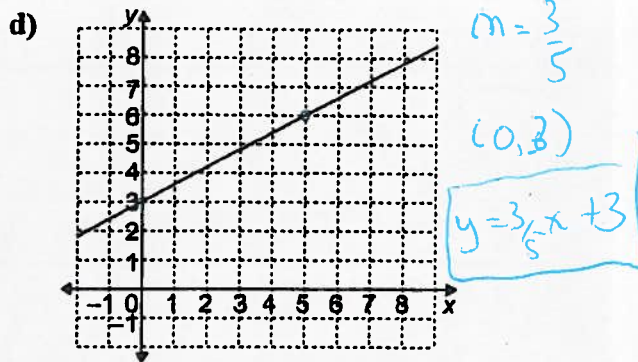
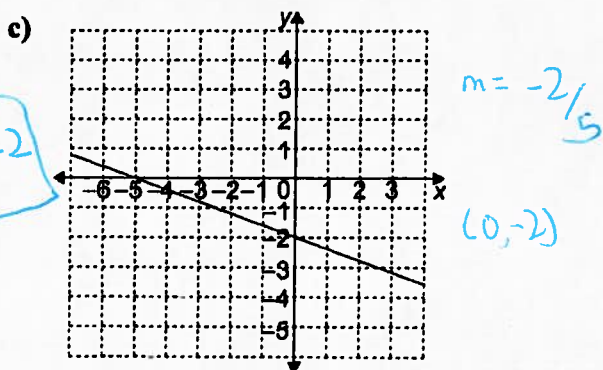
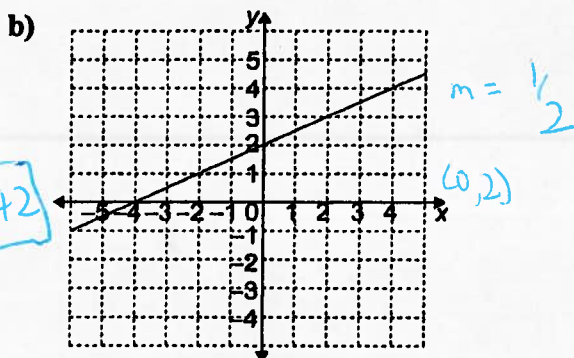
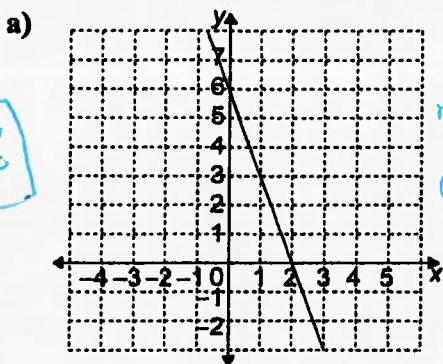


Practice: The Equation of a Line in Slope y-Intercept Form: $y = mx + b$

1. Copy and complete the table.

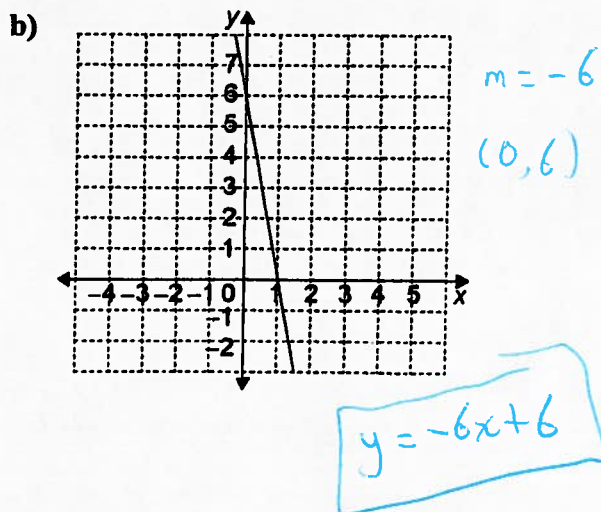
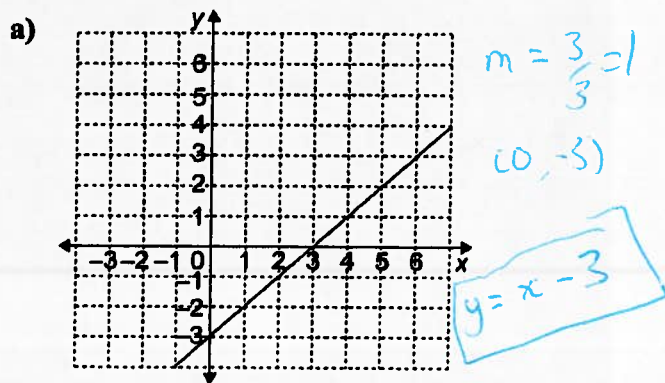
	Equation	Slope	y-Intercept
a)	$y = 4x + 1$	4	1
b)	$y = \frac{x}{2} - 3$	$\frac{1}{2}$	-3
c)	$y = -2x$	-2	0
d)	$y = -x + 2$	-1	2

2. Find the slope and y-intercept of each line.



3. Write the equation of each line in question 2.

4. Write the equation of each line.



5. Write the equation of a line with each slope and y-intercept.

	Slope	y-Intercept
a)	-2	1
b)	$\frac{2}{3}$	-4
c)	5	0
d)	$-\frac{3}{2}$	3

$\rightarrow y = -2x + 1$
 $y = \frac{2}{3}x - 4$
 $y = 5x$
 $y = -\frac{3}{2}x + 3$